

SRINIDHI's GRANDEUR

Exclusive 3BHK Home



About us

At Srinidhi Group, we believe in crafting not just homes but timeless living experiences. With a legacy of excellence in real estate development in Vijayawada, we have successfully completed multiple landmark projects, including premium residential communities and high-end commercial spaces.

Our commitment to quality, innovation, and customer satisfaction has made us a trusted name in the industry. Every project we undertake reflects meticulous planning, superior craftsmanship, and modern aesthetics, ensuring an unparalleled lifestyle for our residents.

With a proven track record of delivering luxurious and future-ready homes, Srinidhi Group continues to redefine urban living, setting new benchmarks in design, sustainability, and community living.

Welcome to a home where **Elegance** meets **Excellence**.

Welcome to Srinidhi



30+ Completed Projects
15 Years of Excellence

Why Choose This Residence?



**Spacious 3BHK
Layouts**



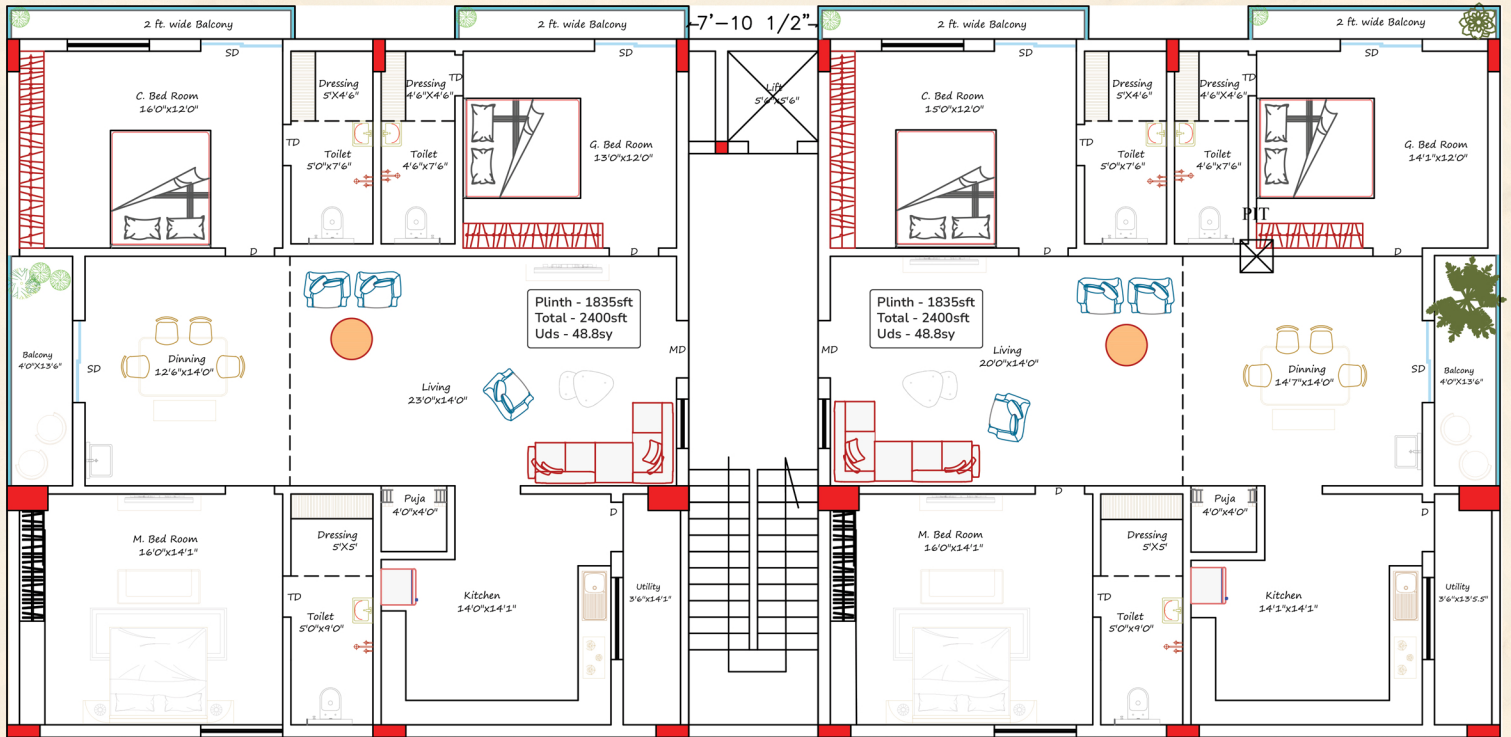
**Luxury Finishes
& Interiors**



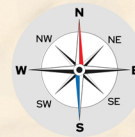
Prime Location

**Limited Edition Homes
Designed for those who
Appreciate Fine living.**

Spacious & Well-Designed Floor Plan



Site Area - 586 SQ. Yards



Slab Area - 3937 sft per Floor

Nearby Amenities



Schools & Colleges



Shopping & Markets



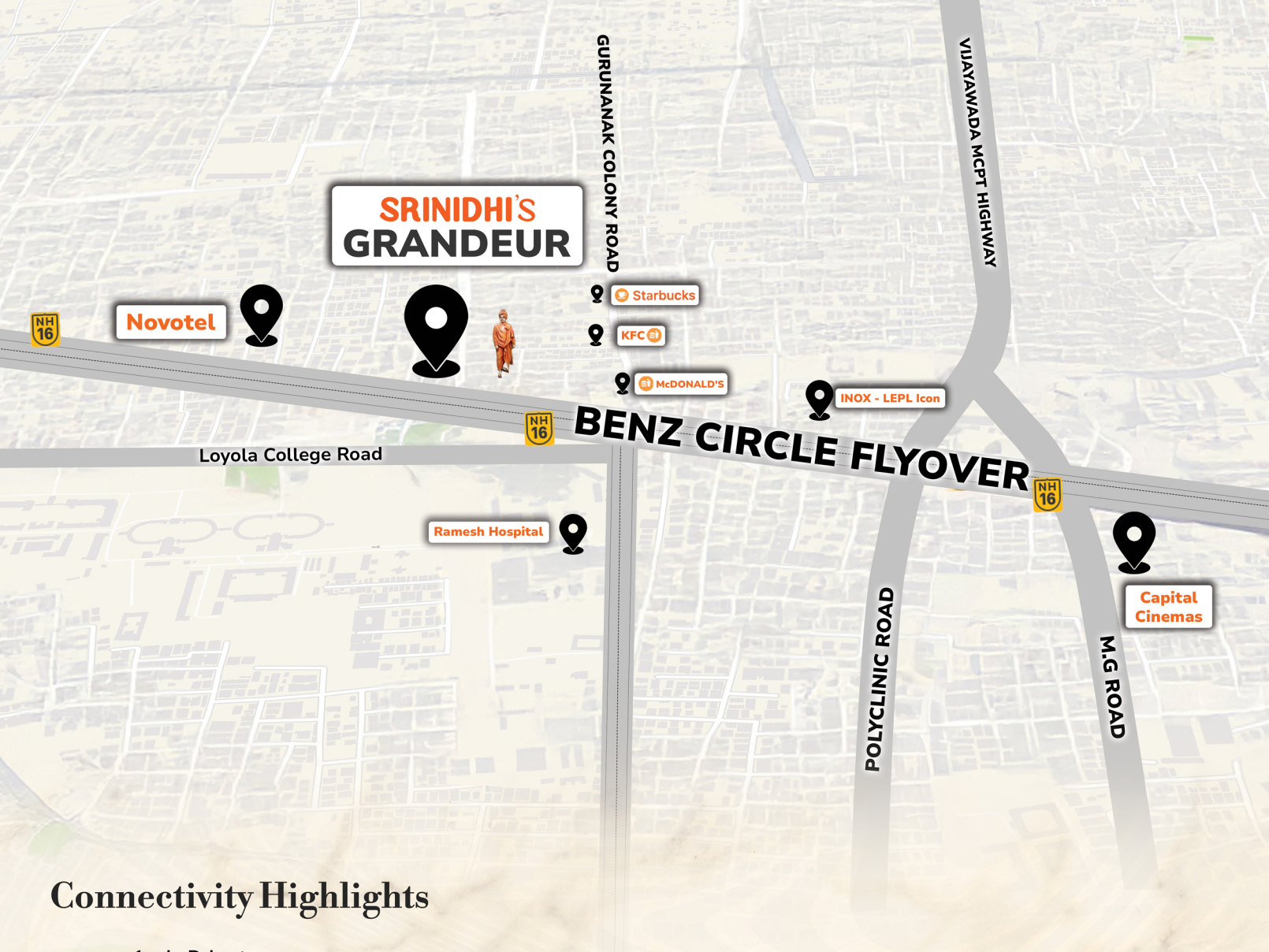
Healthcare



Restaurants & Cafes



Easy Access to Highways



**SRINIDHI'S
GRANDEUR**

Novotel

Starbucks

KFC

McDONALD'S

INOX - LEPL Icon

Ramesh Hospital

**Capital
Cinemas**

Connectivity Highlights

- | | | | | | |
|------------------|---|------------------|--|------------------|--|
| 1
min | 1 min Drive to
Novotel Vijayawada Varun
1 min Drive to McDonald's | 2
mins | 2 mins Drive to
N.A.C Kalyana Mandapam | 3
mins | 3 mins Drive to Ramesh Hospitals
3 mins to Maris Stella College |
| 4
mins | 4 mins Drive to Nirmala Convent
4 mins Drive to Loyola College | 5
mins | 5 mins Drive to Ayush Hospital
5 mins Drive to Rainbow Hospital | | |

"Located in the heart of the city, yet away from the chaos."